

Not bad, here I am again .. might be good to get a few blogs in before the next show happens .. which is the British Quilt and Stitch Village at Uttoxeter, where I have a gallery and am also teaching some rare 1 hour workshops. It is a lovely show, with both quilts and embroidery - so I hope lots of you will be able to visit. I'm busy making work for that at present - but before we get on to that, I promised I would go through finishing these gelli print pieces on canvas.

So here is where we had got to - prints all stuck to canvas with matt medium and sealed with the same. This is nice - but as a stitcher, I like extra detail and texture ...



So out come some supplies .. my neocolour 1 water resistant crayons, some coloured pencils - also water resistant and appliglu - which I love for making stitch like raised marks



this area is not quite working for me .. it is too flat and a bit of maroon dye has done that naughty leaking thing again ..



neocolour 1 worked into the background



canvas right colour - bit of a splodge on leaves ..



more neocolour soon sorts that out and adds some depth



much nicer



I basically work over the whole piece like this with my crayons and occasionally pencils, adjusting colour, bringing out what I like and covering what I don't ...



then I turn to the applique



I use this for making rubbing plates, but have also discovered it is wonderful for adding raised lines and stitch like marks, either in places where I cant stitch (like into thick wood) or in addition to stitches for variety



you can leave it as is, or over paint, or colour with crayons ... here we have all the applique applied

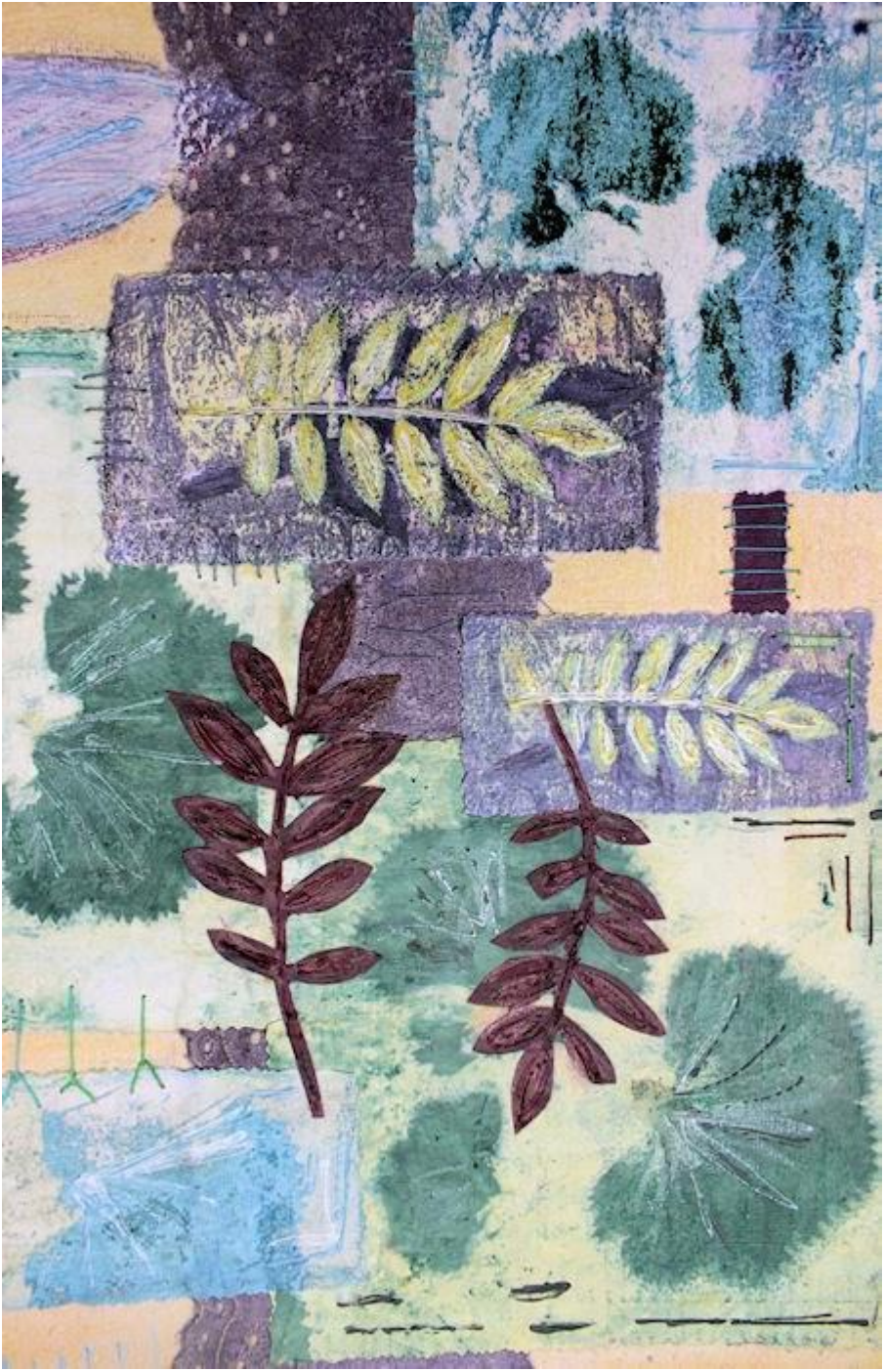


and then I went back again with stitch. I use a fairly thick thread and a darning or chenille needle. Its not sit in front of the TV stitching .. but still pleasant and I love the extra dimension and interest it gives





you can see I have also added more neocolour 1 around the edges. Here are some details .. I'm doing these extra large, so I hope you can see how the applique and thread work so well together

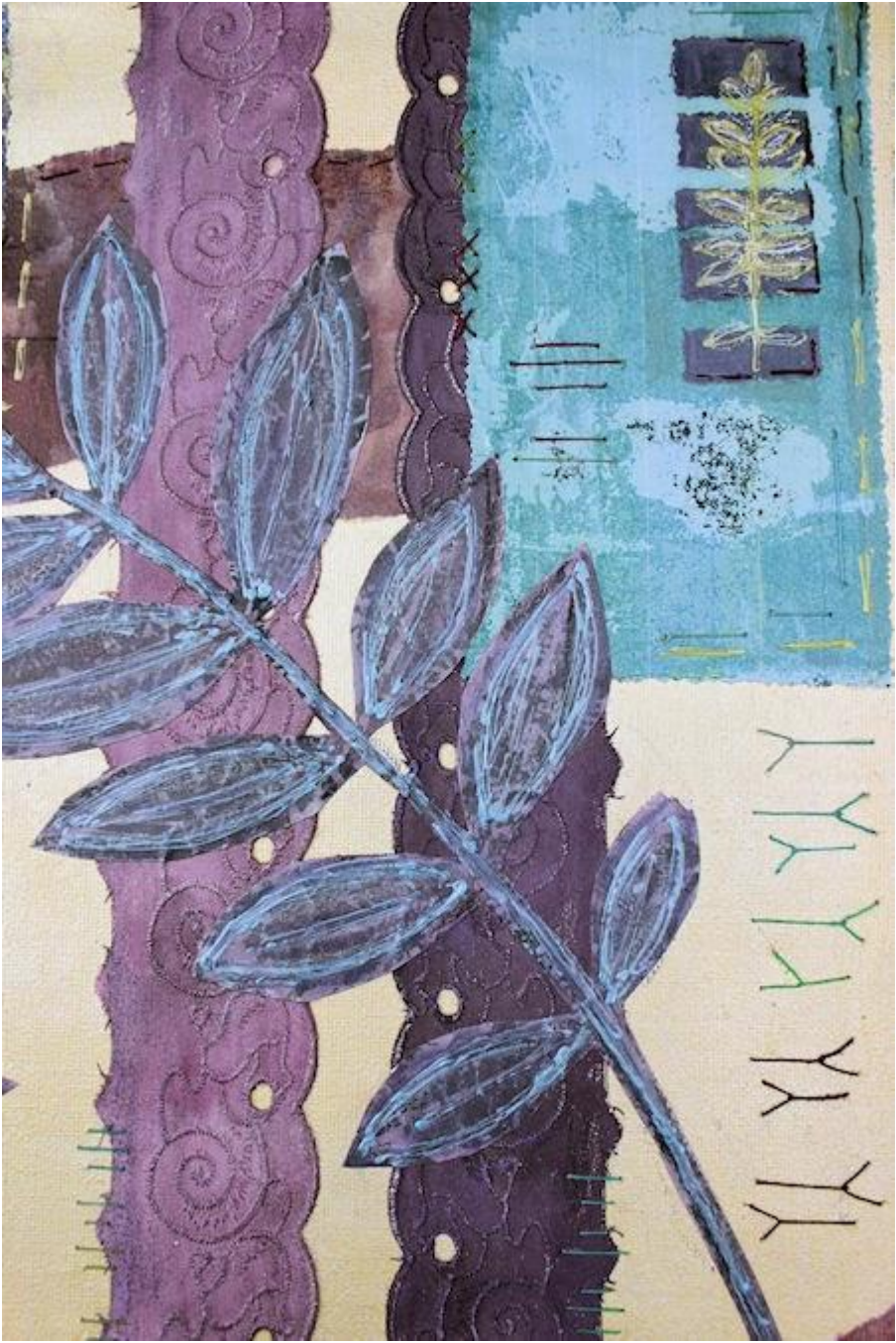


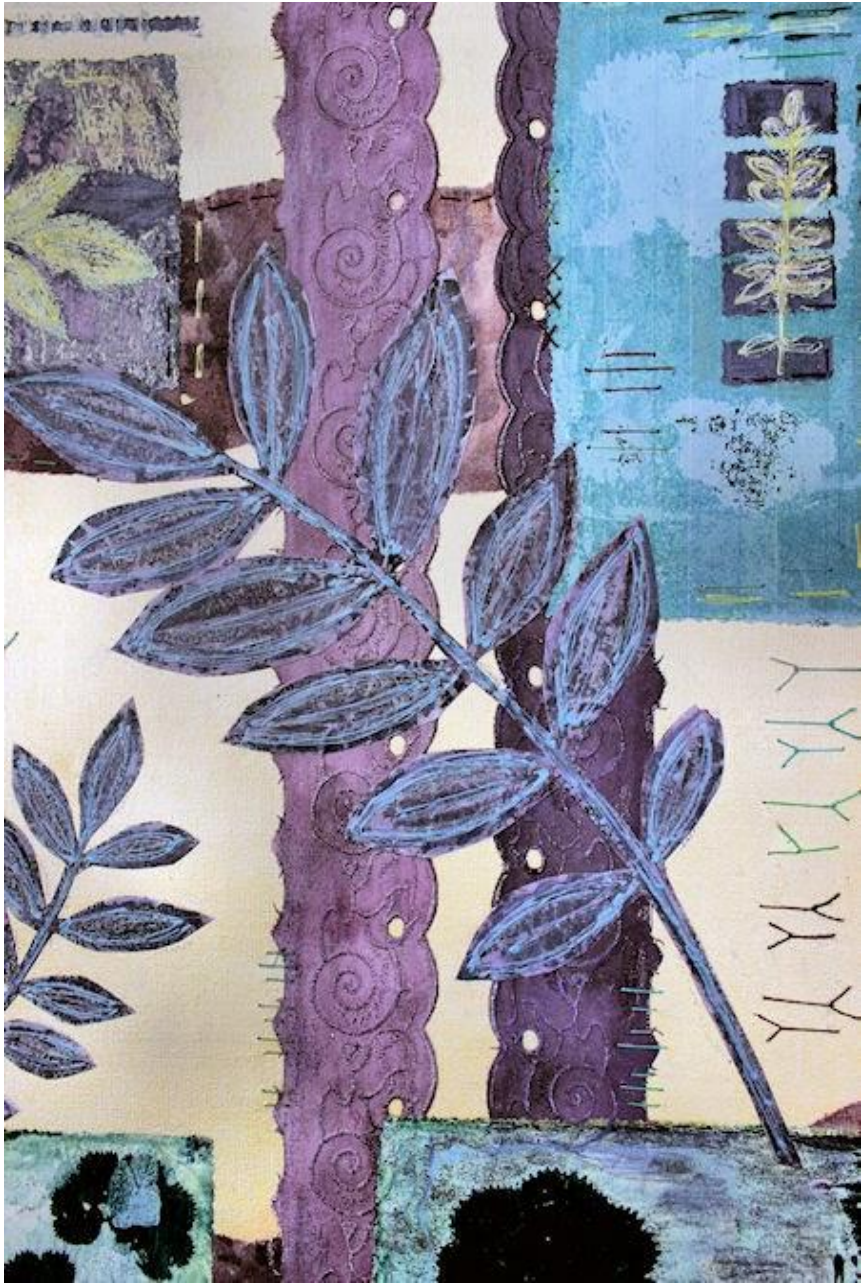




and the second piece









We looked at using neocolour 1 on the bulrushes last time, but I did also add some applique lines on those too .. this is soft gold, which adds a lovely light shimmer





and maybe you remember these passion flower leaves, which I just had to try on the gelli plate? Well, I kept the leaves and applied them to a prepared canvas with matt medium - which both seals and preserves them

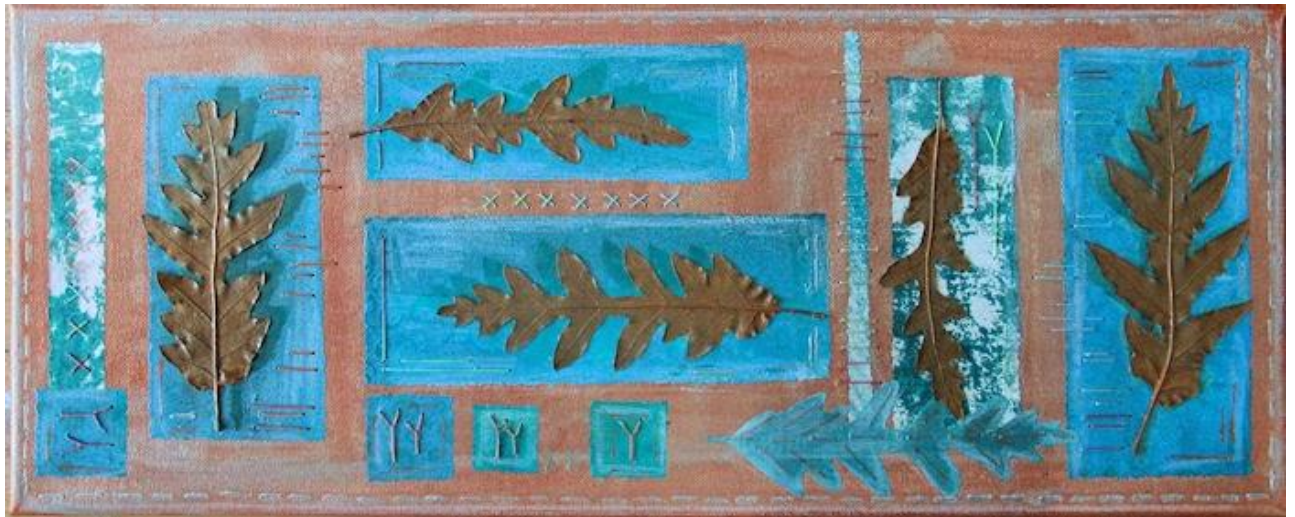


adding in 'stems' and shoots with applique - this one is mink ..



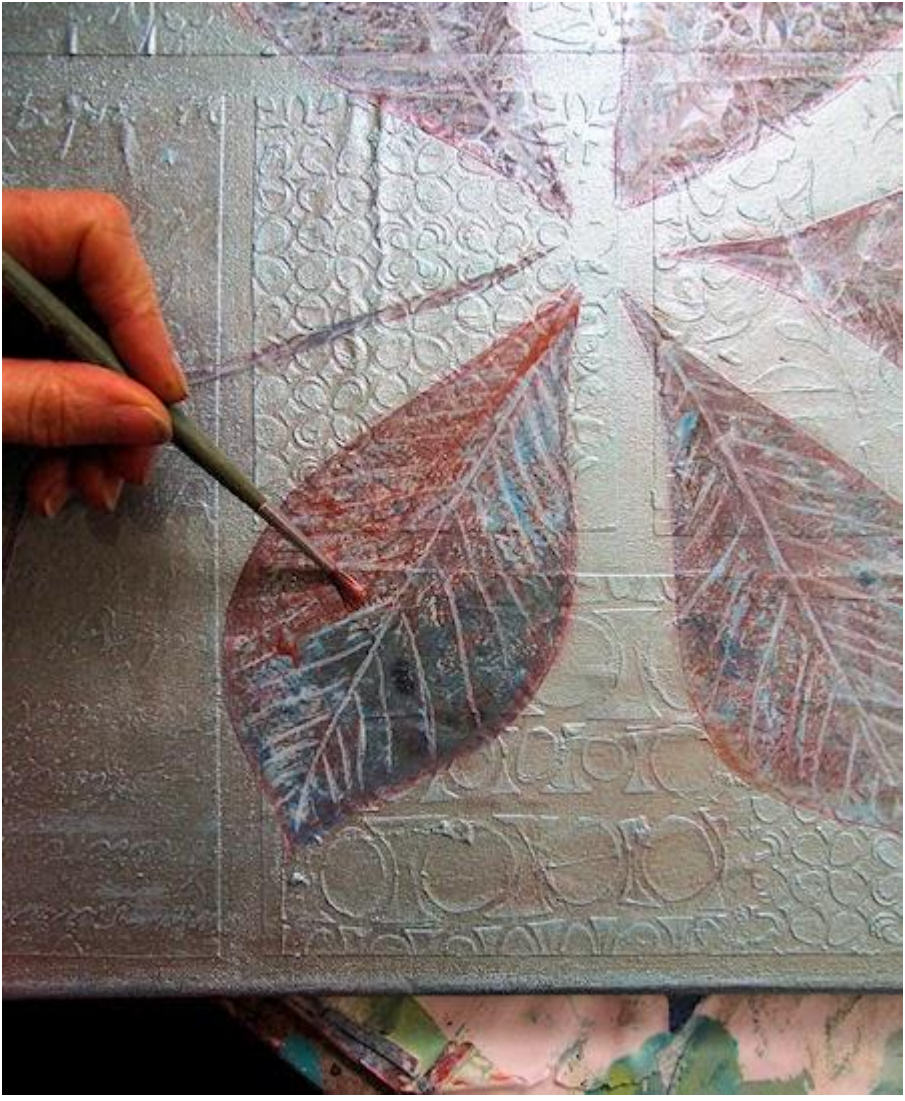


ready for stitch now. And last update (for now) - a few post back I took you through mounting these prints and leaves on this canvas. I have now added stitch. crayon and applique to this .. and it is finished - ready for the show



A lot of these will also be coming down to Art van Go with me, when I teach there next week. Kev and Viv have also asked Jenny Rolfe and I to show the Shape of Nature exhibition there, from 7 April (set up day) until 3 May. So I do hope lots of you will visit .. especially if you missed it at the NEC.

Long enough for today I think! - so here are just a few tasters of the work I am currently making to go in my gallery 'Beauty Matters' at Uttoxeter in April. I'll tell you lots more about that next time.









Thank you for joining me - Hilary x